



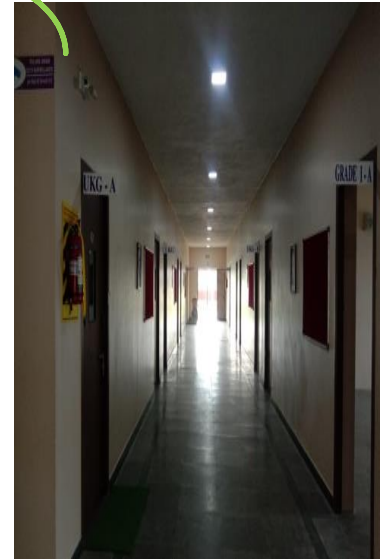
**SIVASAKTHI INTERNATIONAL SCHOOL,  
THALANAYAR 614 712**

## **BEST GLOBAL PRACTICES**

**CCTV SURVEILLANCE**



**NOOK AND CORNER OF  
THE BLOCKS**



**SIGN BOARD - SPITTING PROHIBITED**



**PLAY AREA**





**SIVASAKTHI INTERNATIONAL SCHOOL,  
THALANAYAR 614 712**

**EMERGENCY EXIT WINDOW**



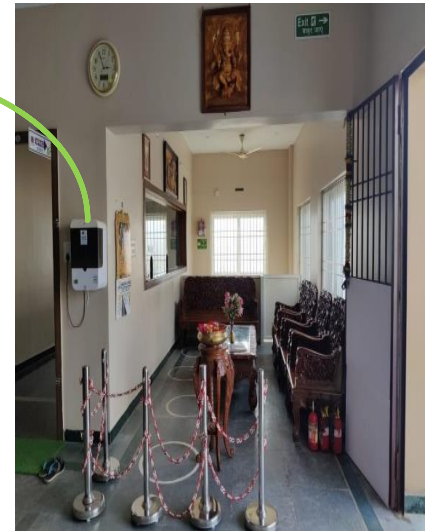
**OVERALL  
INFRASTRUCTURE**



**AUTOMATIC SANITIZER**



**RECEPTION AREA**





**SIVASAKTHI INTERNATIONAL SCHOOL,  
THALANAYAR 614 712**

**SAFETY MEASURE**



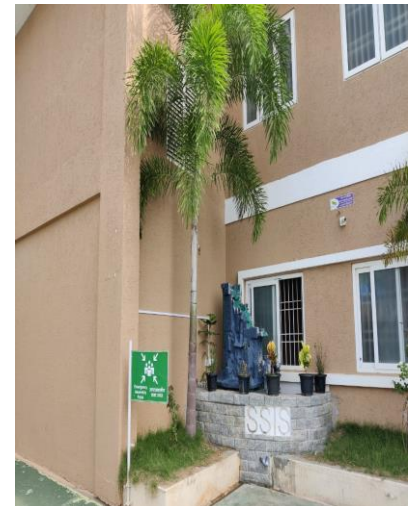
**NEEDY PLACES**



**DISASTER RELIEF AREA**



**ASSEMBLY POINT**







# SIVASAKTHI INTERNATIONAL SCHOOL, THALANAYAR 614 712

## FOR CWSN CHILDREN



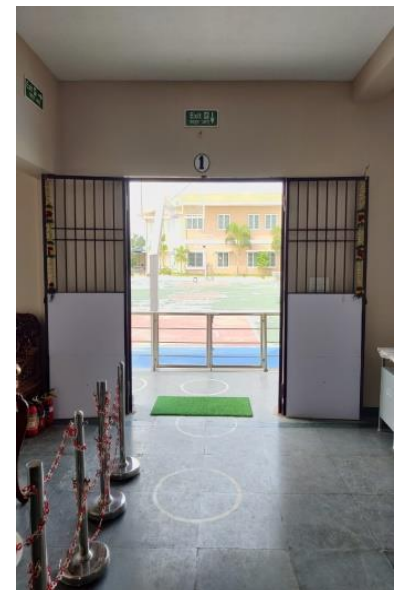
## WASH ROOM



## n- NUMBER OF WAYOUT



## EXIT POINT





**WASTE WATER PIT**



**POWER CABLE PIT**



**RAINWATER HARVESTING PIT**





# SIVASAKTHI INTERNATIONAL SCHOOL, THALANAYAR 614 712

## ALL AROUND THE SCHOOL CAMPUS



## COMPOSITE LAB



## SAFETY MEASURE @ SCHOOL VEHICLES

